

MOGER

Wi100

Intelligent Electric Wind Instrument

Owner'smanual

CONTENT

Precaution -----	01
Feature -----	02
Layout -----	03-04
Instructions -----	05-10
Start-----	05
Play-----	05
Setting-----	06-07
Output Setup-----	08
Audio Playback-----	08
USB Recording-----	09
Charging-----	09
App and Activation-----	10
Play Skills -----	11-13
Tone Bank -----	14-15
Specifications -----	16
Maintain -----	17-18

Precaution

Please read carefully before using

Power Supply

- Please use the power supply with UL, CSA, VED, or CCC standard
- Please use the power supply that can meet the manufacturer's power requirement
- Please unplug the power supply when the device is turned off or during thunderstorm
- Please do not expose the device which has battery power to heat or let it overheat
- When the battery leakage happens, please do not touch the liquid with your skin or eye. If you have touched that, please consult with doctor
- The battery comes with the device may cause fire or chemical burns due to improper handling

Location

To avoid deformation, discoloration, or other serious damage, do not expose this unit to the following conditions:

- Direct sunlight
- Excessive dusty or dirty location
- Extreme temperature or humidity
- Magnetic fields
- High humidity or moisture
- Strong vibrations or shocks

Cleaning

Clean only with a soft, dry cloth. If necessary, slightly moisten the cloth. Do not use abrasive cleanser, cleaning alcohol, paint thinners, wax, solvents, cleaning fluids, or chemical-impregnated wiping cloths.

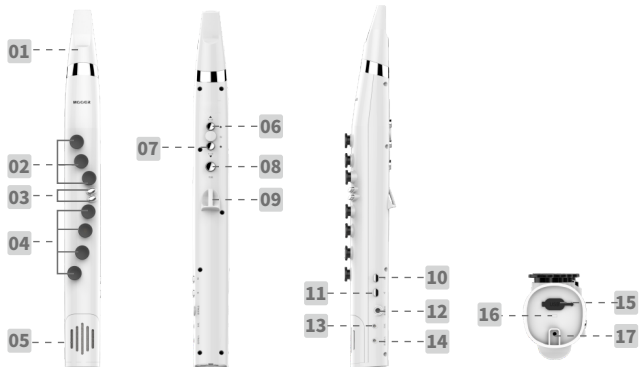
Operation

- Please do not toggle the switch or rotate the knob heavily.
- Please do not let paper scraps, metal debris, or other items fall inside the unit.
- Please do not let the unit fall from a high level, or push or strike the unit heavily.
- Please do not modify the unit without authorization.
- For repairing service, please contact MOOER support team for more information.

Feature

- Easy recorder-style layout suitable for beginners and professionals
- Switch LED with 7 different colors to indicate preset tones or provide technique tips
- 7 storable preset slots and 30 different sample tones and synthesizer tones, covering everything from classic to modern styles
- Unique angel chorus tone
- Can be paired with a dedicated App for quick preset adjustments and firmware updates
- Learn and practice your new performance skills by following the built-in switch LEDs
- Three octave range and pitch shifter for 12 different pitches
- Built-in speakers
- Bluetooth and auxiliary audio functions for audio playback from mobile audio devices
- Audio output for connecting to FRFR systems for live performance
- Supports headphones for silent practice
- Supports OTG to directly record on your mobile device for live streaming or video recording
- Built-in rechargeable battery with up to 6.5 hour battery life when using internal speaker or up to 15 hours when using the audio output jack
- Sleep mode for saving battery

Layout



- 01 Mouthpiece
- 02 Performance keys L1 - L3 (left hand)
- 03 Skill key
- 04 Performance keys R1 - R4 (Right hand)
- 05 Built-in speaker
- 06 Octave up key
- 07 Octave down key
- 08 Function key
- 09 Cord hook/Thumb hook
Place your right thumb under the hook or attach a cord/strap to it.
- 10 Power switch
- 11 Bluetooth switch
- 12 Audio output jack
- 13 Headphone output jack
- 14 AUX IN
- 15 USB port
- 16 Charging indicator
- 17 Water drain

Instructions

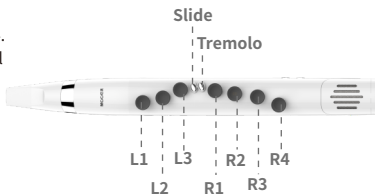
Start

Press and hold the power switch for 1 second. Release the switch when you see the LED turn on. The switch LED will turn on and off for three times, after that, you can start playing.

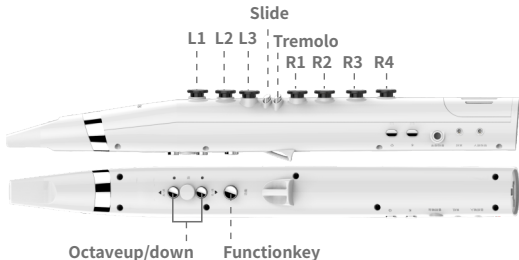
Play

Put your left hand fingers on L1-L3 and put your right hand fingers on the R1-R4. The left little finger controls the two skill keys (slip/tremolo).

Notes: For detailed instructions, refer to the playing skill section.



Setting



Tone selection

Press the function key and L1/L2 simultaneously to select a tone. The Wi100 provides up to 7 preset slots to store your tone preferences. You can switch between different instrument tones in the control App. In the tone selection mode, the 7 switch LED will be on and in 7 different colors.

Volume Adjustment

Press the function key and R1/R2 simultaneously to adjust the volume level. There are 6 volume levels (displayed as 0-5 in the App). 0 for minimum volume level; 5 for maximum volume level.

Sensitivity Adjustment

Press the function key and R3/R4 simultaneously to adjust the sensitivity to suit your playing. The higher the sensitivity you set, the less force you need for playing. There are 6 sensitivity levels (displayed as 0-5 in the App). 0 for minimum volume level; 5 for maximum volume level.

Reverb Adjustment

Press the function key and slip skill key/tremolo skill key simultaneously to adjust the reverb volume level. There are 6 reverb volume levels (displayed as 0-5 in the App). 0 for minimum volume level; 5 for maximum volume level.

Key selection

Press the function key and the Octave Up/Octave Down key simultaneously to adjust the pitch. The factory setting is C. The key ranges from:
G--A \flat --A--B \flat --B--C--C#--D--E \flat --E--F--F#

Notes:

When utilizing the function key to adjust the tone/key, the switch will play a sound to indicate the change. When adjusting the volume/sensitivity/reverb, the switch will play a sound to indicate the current volume level.

Output Setup

1. Connect to external amplifier: Connect the Wi100 to an external amplifier using the audio output jack.
2. Headphones: Plug in your headphones to the headphone jack for silent practice.
3. Built-in speaker: When the audio jack and the headphone jack are not being used, the built-in speaker of Wi100 will activate for normal volume level practice.

Audio Playback

- Bluetooth: You can open the Bluetooth menu of your mobile device. Search for Wi100 to play the audio tracks via Bluetooth.
- AUX IN: You can connect an audio cable to Wi100's AUX IN with external audio device to play the audio tracks.

USB Recording

Wi100 support directly recording with smart phone/tablet via USB port, for live streaming or video recording.


Notes: Wi100 only supports USB-C to USB-A cable.

Charging

When the Wi100 is in low-battery status, the power indicator will blink. Please connect the USB cable to the USB port to charge your Wi100. The charging LED will turn RED while charging and GREEN when charging is complete.

Notes: Wi100 only supports USB-C to USB-A cable and it is recommended to use the original USB cable.

App and Activation

Please download the “Wind” App to your smartphone or tablet for use. Users can set up the tone quickly, learn playing skills and update the firmware in the App .

After installation, please open it, select the Bluetooth icon to pair your mobile device with Wi100. A window for QR code scanning will pop up when the connection is made. Please scan the QR code near the cord hook for activation. The complete function of the Wi100 App will be unlocked after the activation is finished, and the serial number of the device will be shown on the home page of the App.

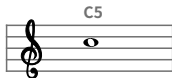
Play Skills

1. Fingerings for different keys

Wi100 is based on the layout of a recorder. It ranges three octaves from C3 to C6. You can utilize the C4-C5 fingering style with the Octave Up/Octave Down key to expand from C3 - C6.

The diagram illustrates the fingering for four keys on the Wi100 instrument. It consists of a musical staff with a treble clef, divided into four measures. Below each measure is a vertical diagram of the instrument's keys, with blue circles representing open keys and black circles representing closed keys.

- C4:** The first measure shows a whole note C4. The fingering diagram shows all keys open.
- C#4/Db4:** The second measure shows a whole note C#4/Db4. The fingering diagram shows the second key from the top closed (black), while all other keys are open (blue).
- D4:** The third measure shows a whole note D4. The fingering diagram shows the bottom key closed (black), while all other keys are open (blue).
- D#4/Eb4:** The fourth measure shows a whole note D#4/Eb4. The fingering diagram shows the second key from the top closed (black), while all other keys are open (blue).



2. Skills for playing

Tremolo: Press the Tremolo key while playing via the left thumb to get the tremolo effect.

Release to stop the effect.

Slip: Press the Slip key while playing to slip with different notes.

Tone Bank

Wi100 Preset Tone

Number	Switch LED	Instrument Tone
1	Red	Alto Saxophone
2	Orange	Recorder
3	Yellow	Bamboo Flute
4	Green	Trumpet
5	Teal blue	Xiao
6	Blue	Organ
7	Purple	Angel Chorus

The complete tone bank

1.Soprano Saxophone	11.Xiao	21.Ocarina
2.Alto Saxophone	12.Cucurbit Flute	22.Ivory Bamboo Flute
3.Baritone Saxophone	13.Suona Horn	23.Irish Flute
4.Trumpet	14.Organ	24.Harmonica
5.Trombone	15.Blues Organ	25.Male Chorus
6.Horn	16.Glass Bottle	26.Female Chorus
7.Flute	17.Violin	27.Angel Chorus
8.Recorder	18.Cello	28.Sawtooth Wave Synth
9.Bamboo Flute	19.Clarinet	29.Square Wave Synth
10.Xun	20.Oboe	30.Mixed Sawtooth Wave Synth

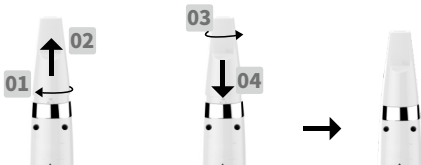
Specifications

Brand:	Wi100
Input:	3.5mm stereo audio input jack
Output:	6.35mm mono audio output jack
Headphone output:	3.5mm stereo audio output jack
USB cable:	USB-C to USB-A
Bluetooth version:	5.0 (Dual mode)
Speaker:	1x1, 1W
Battery:	4000mA
Battery life:	6.5 hours (using built-in speaker in lab environment); 15 hours (using 6.35mm audio output)
Weight:	420g
Dimensions:	62mm (D) X 45mm (W) X450mm (H)
Accessories:	Owner's manual, USB cable, Mouthpiece x 2, cleaning cloth, strap, instrument bag, 3.5mm audio cabl

Maintain

1. Attach / remove the mouthpiece

Please hold and rotate the mouthpiece counter clockwise to remove the mouthpiece for cleaning or replacing; please ensure the mouthpiece fits the instrument body correctly, ensure there is no gap between it and the body while attaching it.



2. Cleaning

Recommend to remove the mouthpiece from the instrument for cleaning, if necessary, you can clean it with water and dry it by soft cleaning cloth; recommend to use a slight wet soft cloth for body cleaning. Do not wash it by water directly to avoid damage to electronic components.



3. Draining

When you lean the instrument against a wall or other vertical surface with the mouthpiece upward, any saliva inside will exit from the water drain. Wipe it off with a soft cloth.



MOOER
www.moeraudio.com

SHENZHEN MOOER AUDIO CO. LTD
6F, Unit D, Jinghang Building, Liuxian 3rd Road,
Bao'an 71 District, Shenzhen, China. 518133
Made in China