



3000i

The best, redefined.

The new 3000i Series by Q Acoustics



Contents

Introduction	4
The Technology	10
The Range	12
Specifications	18
Accessories	19

Expectations, Elevated

The 3000i Series is an evolution of the 3000 Series, which has undergone a number of innovative improvements intended to bring about significant enhancements in both sonic performance and aesthetics from the already established and highly awarded range. The 3000i Series forms the core Hi-Fi loudspeaker offering from Q Acoustics.

Coming from a fusion of both evolutionary and revolutionary thinking, the 3000i Series benefits from state-of-the-art speaker technology, as

well as improvements to the cabinet construction. Every 3000i Series model is an outstanding, genuine Hi-Fi loudspeaker with models that can also be combined to deliver a fantastic home cinema sound.

Beautiful to behold and available in four attractive finishes. The perfect soundstage for movies and music, at an impressive price point that will deliver a pure and uncoloured sound that will please even the most discerning audiophile.







HIGH

FREQUENCY

ACOUSTICS

Q

ACOUSTICS



The Ultimate Stereo Image

The purpose of an exceptional Hi-Fi system is quite simply to provide a musical experience in the home, which comes as close as possible to the real thing. The 3000i Series boasts a range of features that enable exactly that. Every detail from the cabinet enclosure to the drivers, to the pioneering 'Concept' technology has been commissioned to this range. The emphasis on

advanced cabinet design principles that preserve the subtle sonic clues which enable the ear to perceive a solid 3D soundstage is evident. Careful component matching and exhaustive listening tests have meant that the partnering electronics will do nothing to detract from the sheer enjoyment garnered by the sense of intimacy in the performance.



Beautiful Inside & Out

The 3000i Series speakers are available in four finishes; Graphite Grey, English Walnut, Carbon Black or Arctic White. All are finished with an attractive chrome-finish bezel around each driver and feature magnetic speaker grilles, ensuring there is a finish perfect for your chosen listening room.



Arctic White



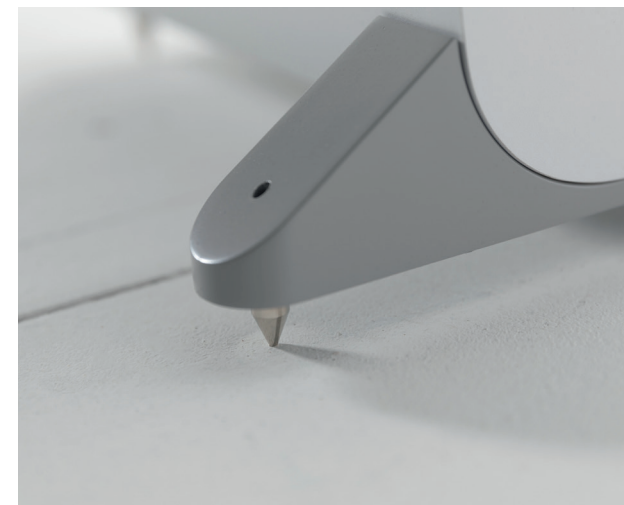
Carbon Black



Graphite Grey



English Walnut



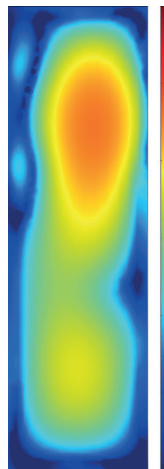


Leading Technology, Pioneering Innovation

At the heart of the 3000i Series is a wealth of technology to ensure these are a true step up from an already highly awarded series. P2P™ bracing has been introduced to help keep the enclosure extra quiet, HPE™ to eliminate sympathetic resonance, equalising air pressure within the cabinet and a 22mm High Frequency Driver with a micro-fibre soft dome with wide surround which helps to create a wide, even dispersion of stereo. Just a few of the many technologies employed to elevate the 3000i Series.

P2P™ *

Q Acoustics P2P™ (Point to Point) bracing across the 3000i series supports the parts of the enclosure that need to be stiffened making the new enclosures exceptionally rigid, improving the focus of the stereo image and giving the soundstage more accuracy than ever before.



Conventional Bracing



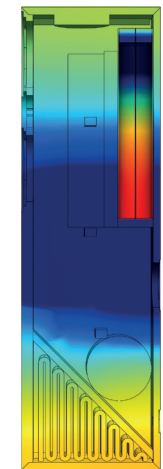
P2P™ Bracing

HPE™ **

HPE™ (Helmholtz Pressure Equalizer) technology designed to convert pressure to velocity and reduce the overall pressure gradient within the speaker enclosure, has been applied to the Q 3050i floorstanding speakers to reduce cabinet resonance. This technology is perfect for taller loudspeakers that tend to resonate at a single favoured frequency.



Without HPE™



With HPE™

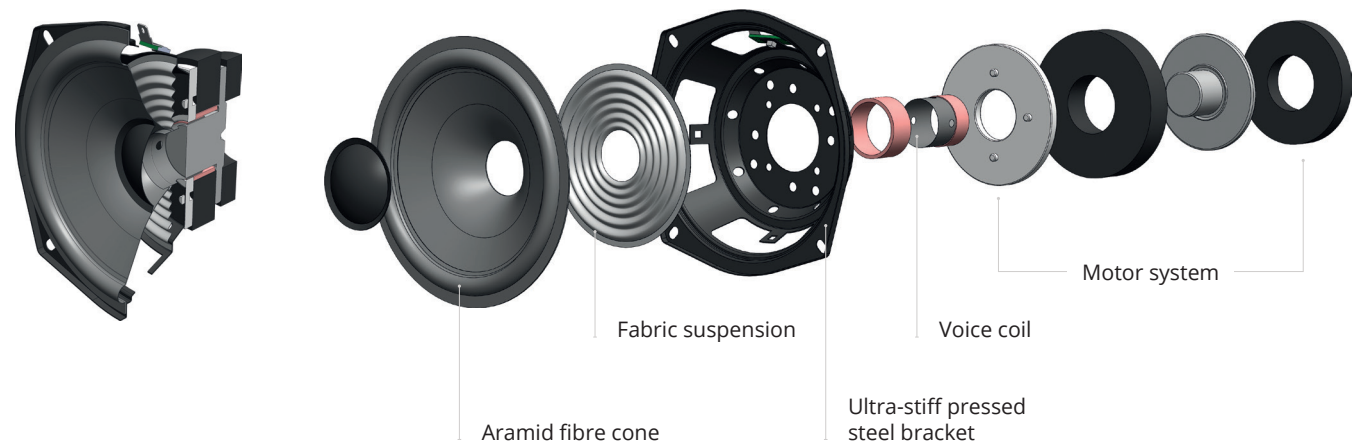
High-Frequency Driver Unit

3000i Series tweeters are decoupled from the baffle via a compliant suspension system. Vibrations from the woofer, which can impair the performance of the tweeter are isolated allowing the tweeter to perform with dramatically reduced interference.



Mid/Bass Driver

Whichever 3000i model you choose the cone is precision formed from impregnated and coated paper and teamed with a newly developed, low-hysteresis, rubber surround. The coated paper cone provides the optimum balance between stiffness and self-damping which means it can accelerate without flexing and stop very accurately without unwanted resonances.



Q 3010i

Room-filling Bookshelf / Standmount Speakers with 100mm (4 in) and 22mm (0.9 in) precision drivers, which can be shelf-mounted on compliant, pre-fitted rubber feet, stand-mounted or wall-mounted on optional, dedicated stands and brackets.

- Focussing on power-to-size ratio, the crossover has been revised to take advantage of a larger cabinet volume to enhance sensitivity and bass extension.
- Foam bungs are provided for the rear-facing ports to help with less than ideal room positioning. The level of bass can be reduced to compensate, but definition and bass extension are increased.
- Conventional terminal panel cut-outs have been removed, giving greatly improved structural integrity to the enclosures and new low profile binding posts have been incorporated with sockets deep enough to accept 4mm (0.16 in) Banana Plugs. (We always recommend QED Speaker Cables).



Q 3020i

Substantial Standmount / Bookshelf Speakers with 125mm (5 in) and 22mm (0.9 in) precision drivers, which can be shelf-mounted on compliant pre-fitted rubber feet, stand-mounted or wall-mounted on dedicated optional stands and brackets.

- A cabinet as deep as it is high provides the listener with deep powerful bass from as small a frontal area as is possible to achieve.
- Foam bungs are provided for the rear-facing ports to help with less than ideal room positioning. The level of bass can be reduced to compensate, but definition and bass extension are increased.
- Conventional terminal panel cut-outs have been removed, giving greatly improved structural integrity to the enclosures and new low profile binding posts have been incorporated with sockets deep enough to accept 4mm (0.16 in) Banana Plugs (We always recommend QED Speaker Cables).



Q 3050i Floorstanding

Striking Floorstanding Speakers with twin 165mm (6.5 in) and 22mm (0.9 in) precision drivers, this can be floor-mounted using rubber feet or spikes (provided), also featuring rear outrigger plinths for extra stability.

- The internal structure of the Q 3050i has been designed to incorporate what we have learned about minimising organ piping using Helmholtz Pressure Equalisation (HPE™). This greatly improves the linearity of the bass performance and the cabinet uses Point-to-Point (P2P™) bracing techniques to reduce intrusive cabinet vibrations both coming from our experience with Concept Series.
- Foam bungs are provided for the rear-facing ports to help with less than ideal room positioning. The level of bass can be reduced to compensate, but definition and bass extension are increased.
- Conventional terminal panel cut-outs have been removed, giving greatly improved structural integrity to the enclosures and new low profile binding posts have been incorporated with sockets deep enough to accept 4mm (0.16 in) Banana Plugs (We always recommend QED Speaker Cables).



Q 3060S

Slimline Active Subwoofer with a 200mm driver and a powerful 150W amplifier is wall-mountable with an optional, dedicated wall bracket or can be floor-mounted using rubber feet or the spikes provided.

- All of the controls and connections are hidden behind a magnetic hatch with a down-facing port for discrete cable runs.
- The Q 3060S is among the slimmest subwoofers available but can still deliver every nuance of an acoustic double bass or rumble of a cinematic explosion.



Q 3090Ci

Accurate Centre Speaker with twin 100mm (4") and 22mm (0.9") precision drivers can be shelf or cabinet mounted on its compliant pre-fitted rubber feet or wall-mounted on optional, dedicate brackets.

- The Centre Speaker is the heart of any Cinema system where we've worked hard to perfect crisp, clear and balanced dialogue.
- The Q 3090Ci is the same width as most Amplifiers and AV Receivers so will fit attractively into the specialist furniture designed to house them.
- The normal terminal panel cut-out has been removed, giving greatly improved structural integrity to the enclosures and new low profile binding posts have been incorporated with sockets deep enough to accept 4mm (0.16 in) Banana Plugs.



Cinema Packs

Q 3010i Cinema Pack

Comprising of 2 pairs Q 3010i + Q 3060 Subwoofer + Q 3090i Centre and providing a massive cinema sound from compact cabinets all of which can be wall mounted with optional, dedicated brackets.

Q 3000i in Dolby Atmos and DTS:X

Closely matched Q Acoustics In-ceiling and surface-mount speakers are available to add to either 3000i Cinema pack to provide an enhanced multi-channel sound. Under these circumstances we'd also recommend using 2 x subwoofers.



Q 3010i Cinema Pack

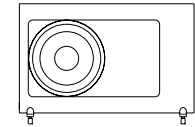
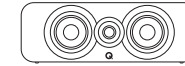
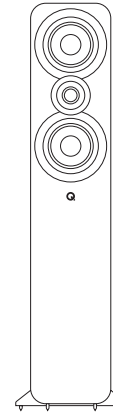
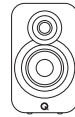
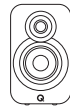
Q 3050i Cinema Pack

Comprising of 1 pair Q 3050i Floorstanding + Q 3010i + Q 3060 Subwoofer + Q 3090i Centre for where a main set of Floorstanding speakers are preferred for listening in stereo as well.



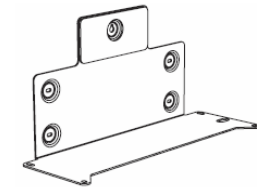
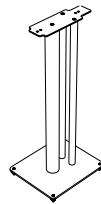
Q 3050i Cinema Pack

Specifications



	Q 3010i	Q 3020i	Q 3050i Floorstanding	Q 3090Ci	Q 3060S
Loudspeaker					
Enclosure Type	2-way reflex	2-way reflex	2-way reflex	2-way reflex	infinite baffle
Bass Unit	100 mm (4")	125 mm (5")	2 x 165 mm (6.5")	2 x 100 mm (4")	200 mm (8")
Treble Unit	22 mm (0.88")	22 mm (0.88")	22 mm (0.88")	22 mm (0.88")	-
Frequency Response (+3 dB, -6 dB)	65 Hz – 30 kHz	64 Hz – 30 kHz	44 Hz – 30 kHz	75 Hz – 30 kHz	35 – 250 Hz
Average Impedance	6 W	6 W	6 W	6 W	-
Minimum Impedance	4 W	4 W	4 W	4 W	-
Sensitivity (2.83 V@1 m)	86 dB	88 dB	91 dB	89 dB	-
Stereo Amplifier Power	15 – 75 W	25 – 75 W	25 – 180 W	25 – 100 W	-
AV Receiver (2 ch. driven)	50 - 125 W	50 - 125 W	50 - 165 W	50-165 W	-
Internal Amplifier Power	-	-	-	-	150 W Class D
Cross-over Frequency	2.6 kHz	2.4 kHz	2.5 kHz	2.7 kHz	35 – 250 Hz (var)
Effective Volume	4.0 l (244 cu. in.)	6.1 l (372 cu. in.)	32.4 l (1977 cu. in.)	6.6 l (403 cu. in.)	10.6 L (647 cu. In.)
Enclosure Dimensions (WxHxD) (inc. grille terminals and feet)	150 x 253 x 252 mm (5.9 x 10.0 x 9.9")	170 x 278 x 282 mm (6.7 x 10.9 x 11.1")	310 x 1020 x 310 mm (12.2 x 40.2 x 12.2")	430 x 152 x 216 mm (16.9 x 6.0 x 8.5")	480 x 300 x 150 mm (18.9 x 11.8 x 5.9 ")
Weight (per speaker)	4.1 kg (9.0 lbs)	5.5 kg (12.1 lbs)	17.8 kg (39.2 lbs)	6 kg (13.2 lbs)	8.5 kg (18.7 lbs)
Stock codes	QA3510 Grey QA3512 Walnut QA3516 Black QA3518 White	QA3520 Grey QA3522 Walnut QA3526 Black QA3528 White	QA3550 Grey QA3552 Walnut QA3556 Black QA3558 White	QA3560 Grey QA3562 Walnut QA3566 Black QA3568 White	QA3590 Graphite QA3592 Walnut QA3596 Black QA3598 White

Accessories



Accessory

Q 3000FSi Speaker Stand

Q 3000WB Speaker Bracket

Q 60WB Subwoofer Bracket

Description

Q 3000FSi Floor Stands are designed to provide secure and sonically optimised supports for Q 3010i, Q 3020i and 3090i, available in two finishes to choose which looks best with your speakers.

Q 3000WB Wall Brackets will provide safe and flexible wall mounting for Q 3010i, Q 3020i and 3090i and are also compatible with 3000 and 2000i, available with two finishes to suit your speakers.

Q 60WB Subwoofer Wall Bracket firmly fixes a Q 3060S to the wall adding even more power to the bass from the close proximity of the wall and ensuring that it can't overturn.

Dimensions W x H x D

250 x 682 x 290 mm
(9.8 x 26.9 x 11.4")

70 x 159 x 99 mm
(2.8 x 6.3 x 3.9")

422 x 233 x 163 mm
(16.6 x 9.2 x 6.4")

Weight (each)

6.2 kg (13.7 lb)

0.4 kg (0.9 lb)

2.4 kg (5.3 lb)

Stock codes

QA3102 Dark
QA3104 Light

QA3100

QA7822



#hearingisbelieving



qacoustics.co.uk