

1. Ceiling cut out and screen support

The in-ceiling screen requires a cut out width of 155mm and a length corresponding to the screen size. The screen casing requires a minimum of 170mm from the finished ceiling to the underside of any supporting metal work.

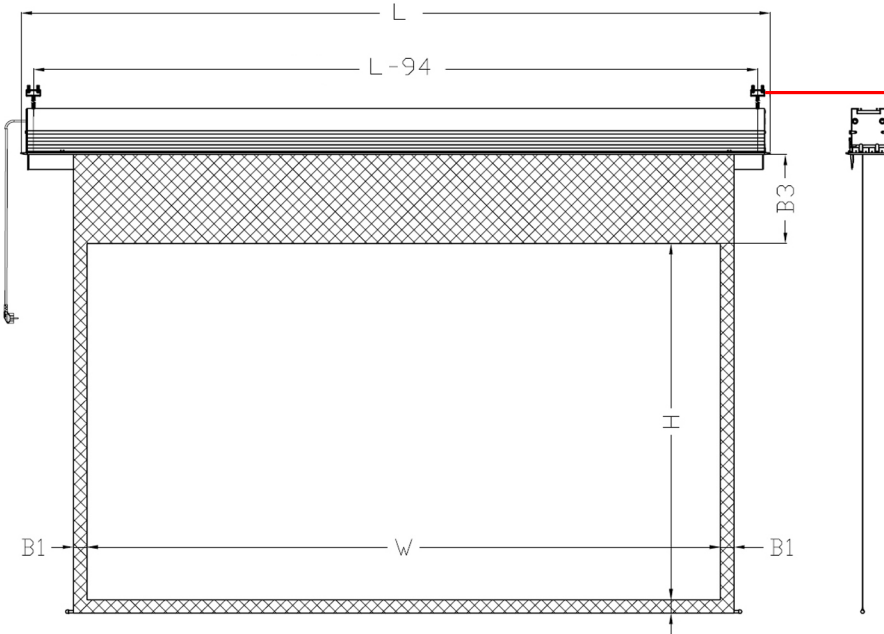
The supplied threaded bars must be fitted to either the concrete floor slab or a supporting structure fitted between the floor joists. The distance between each support bar is determined by the length of the screen case "L" minus 94mm. The bars should be cut so that the distance from the bottom of the bar to the finished ceiling is 60-80mm.

Cut out size (LxWxD)

7ft - 2435 x 155 x 170

8ft - 2750 x 155 x 170

9ft - 3055 x 155 x 170

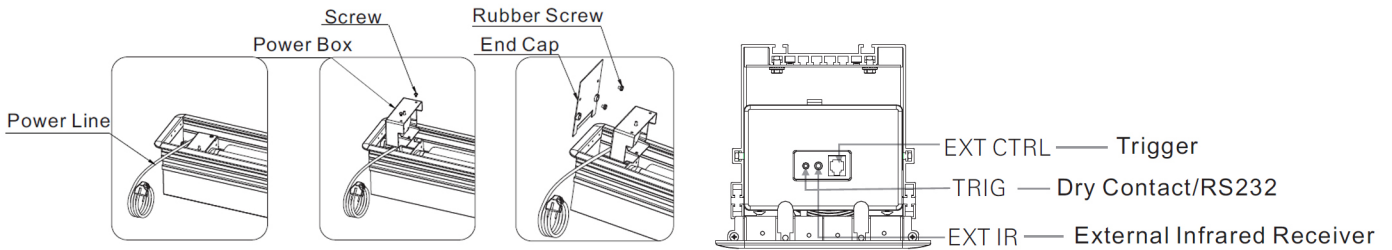


Dimensions

Screen	16:9		
	7ft	8ft	9ft
W	2037	2347	2657
H	1146	1320	1494
B1	50	50	50
B2	50	50	50
B3	800	630	450
L	2466	2776	3086

2. Power and control connections

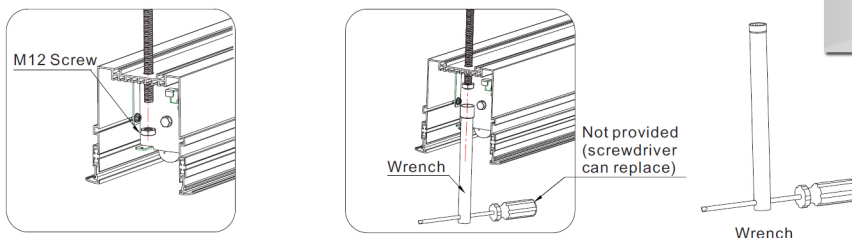
First isolate any power supply that will be used for the screen. Although the screen is fitted with a standard mains plug it is sometimes easier to remove the plug and join the screen cable to a power cable exiting through the ceiling cutout. This join can be done after the screen is in position with a small isolated junction box. The end panel of the screen case and the power box can be removed to make lifting the screen onto the threaded support bars easier.



3. Fitting the screen in position

First ensure the power supply and any control cables are through the cut hole in the ceiling. Lift the screen into the cut out so that the threaded bars go through the holes at the top of the screen case then thread on the supplied nut a few centimeters. While the screen is hanging it the lowered position connect power cables and plug in any trigger/IR cable.

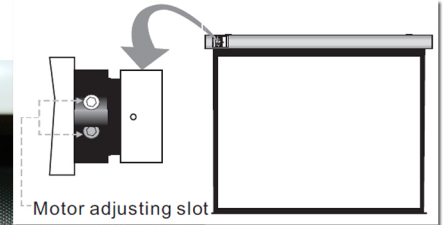
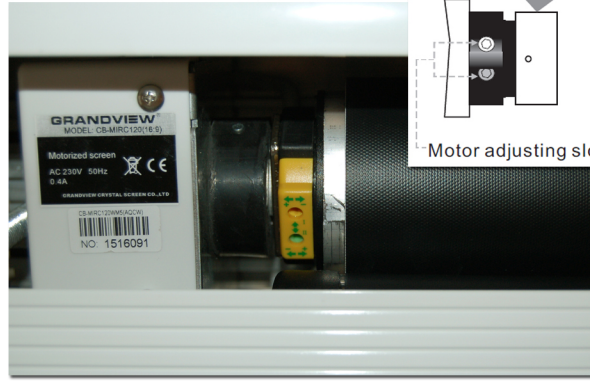
Turn on the power supplying the screen and test the screen using the manual push button on the underside of the case. Also test any IR or 12volt trigger connections. Lift the screen further in the ceiling to its final position by tightening the nut using the provided wrench.



4. Adjusting the downward stop position

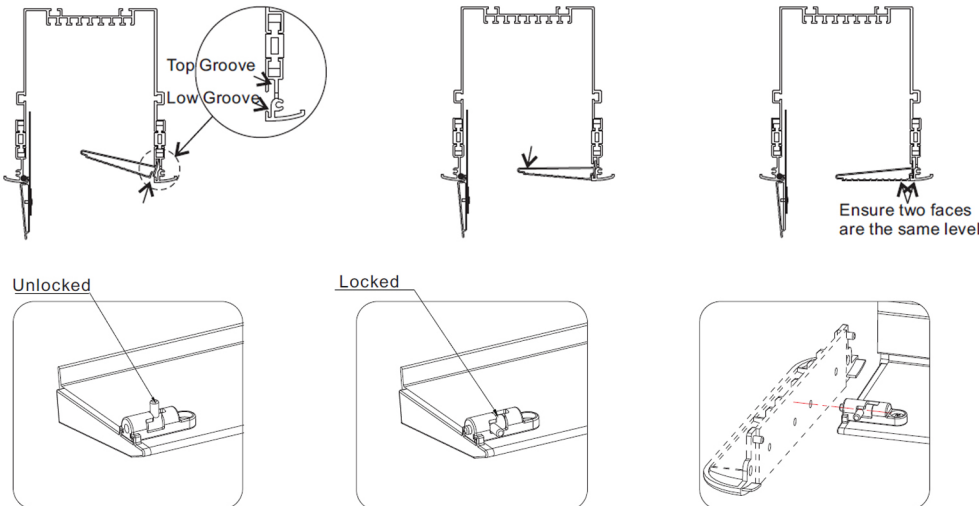
Turning the yellow adjuster anticlockwise will stop the screen in a higher position. (making the screen smaller)
 Clockwise rotation will lower the screen stop position. (making the screen larger)
 One turn is equal to approximately 15-20mm of screen movement.

The green adjuster is factory set.
 Do not adjust this setting without consulting your dealer.



4. Fitting the aluminium trim

Once the down stop of the screen has been adjusted the trim can be fitted. While lifting the inside edge of the trim push the outside edge into the groove running along the length of the case.
 The locking latch at each end of the trim needs to be in the unlocked position until the trim is sitting flat with the surround of the screen.



For more information visit: www.cyberscreens.co.uk
 Tel: 01438 311 625