

VECTA

installation guide



Contents

Introduction	1
Vecta Mounts	2
V-MOUNT	2
Angled Wedge	3
V-CORNER	4
V-CORNER Back to back	5
V-CLUSTER Mount Recommended for use with V240-LV	5
Fitting the Loudspeaker	6
Setting up the V240-LV	6
Finished Locations	7
Specifications	8
Warranty	8

Introduction

Welcome to Vecta, a new weatherproof lifestyle loudspeaker that is just at home outside in the elements thanks to its IP55 rating as it is indoors in a bar, lounge area, swimming pool, sauna, the list is endless.

We have used our highly acclaimed C-CAM technology to develop the 2 bass units and tweeters to give any environment the Monitor Audio sound.

The flexibility doesn't just end with the environments it can be used in, but also how it is fitted. There are 3 bracket options and numerous configurations available: Single corner mounting (wall or eaves), two back to back on a wall using two of the corner brackets, square on to the wall, angled off the wall using the wedge and standard bracket and from the ceiling using a pole and the V-CLUSTER mount.

Vecta Mounts

NOTE: All mounts are sold separately. Choose the correct mount for your fixing configuration.



WARNING: Please ensure you are confident in providing a safe and secure fixing. Please use appropriate fixings for the type of wall construction as no wall fixings are supplied.

V-MOUNT

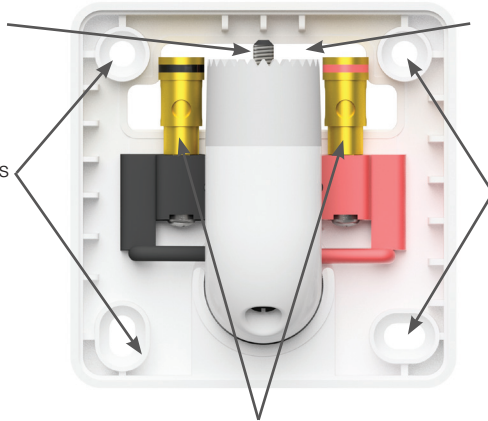
The V-MOUNT is the mount used when fixing the loudspeaker square on to the wall either horizontally or vertically. This is held in place using up to 4 fixing points - fixings not supplied. There is a cable through hole to feed the cable through and into the terminals. Remove the insulation from the cable and clamp the cable in place using the push down terminals.

Loudspeaker Fixing Bolt.
Secured from below, this fixes the loudspeaker to the bracket.

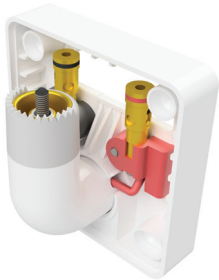
Wall Fixing Points
Use appropriate fixings and screws for the wall it is being fixed to. (4 in total)

Cable Through Hole.
Feed cable through and feed around into terminals.

Wall Fixing Points
Use appropriate fixings and screws for the wall it is being fixed to. (4 in total)



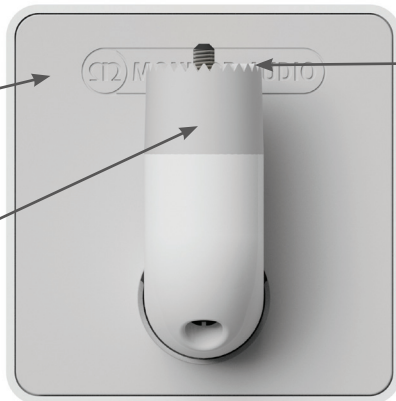
Loudspeaker Terminals.
Push down on the terminals to clamp the cable in place.



Bracket Cover.
When secured to the wall, slide this over the loudspeaker mounting pole and press into place to hide cables and wall fixings.

Loudspeaker Mounting Arm.
This is the arm the loudspeaker will sit on.

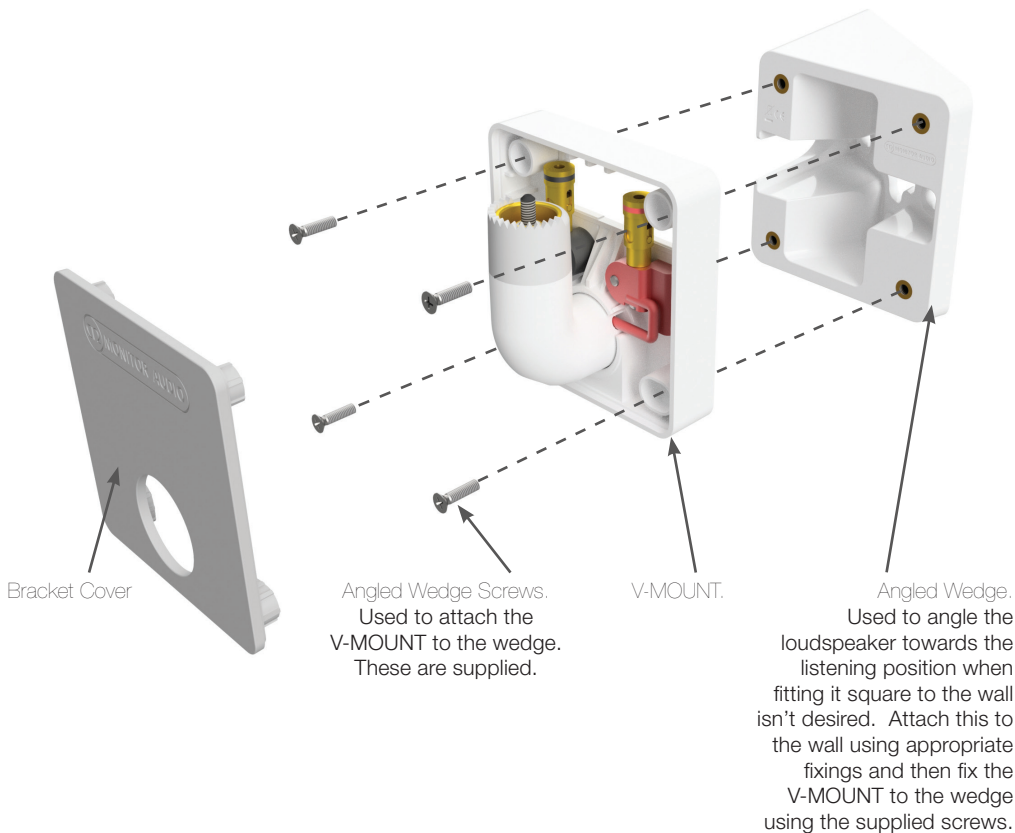
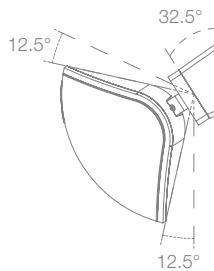
Teeth
Used to set the angle of the loudspeaker and also help grip it in place.



Angled Wedge

The wedge has a 32.5 degree angle to it and is used in conjunction with the V-MOUNT to angle the loudspeaker off the wall when corner mounting (using the V-CORNER) or square to the wall is not suitable. The combination of the wedge and angular adjustment of the speaker will allow up to 45 degrees of adjustment. Like the V-MOUNT it can be used in both horizontal and vertical configurations.

Fixings are not supplied to secure the wedge to the wall. Only to secure the V-MOUNT to the wedge.



NOTE: When adjusting the angle of the loudspeaker, always loosen the fixing bolt and lift the loudspeaker off the teeth so as not to damage them.

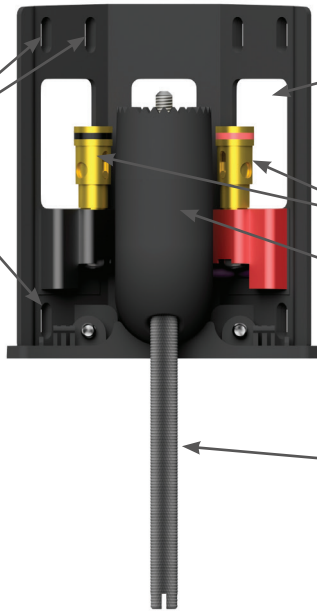
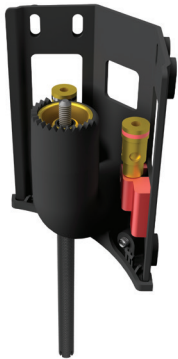
V-CORNER

Single V-CORNER mounts can be used to fit the loudspeakers vertically into the corner of the walls or horizontally in the corner of a wall and ceiling. It is also strong enough to just mount one side of the bracket to an open sided wall or post. Feed the cable through any one of the three through holes and using bare wire clamp the cable in place in the sprung, push down terminals.

Wall Fixing Points.
3 on each side.

Use appropriate fixings and screws for the wall it is being fixed to.

NOTE: If the wall is a long way off square, using one side of the bracket to fix it to the wall will still hold the loudspeaker sufficiently.



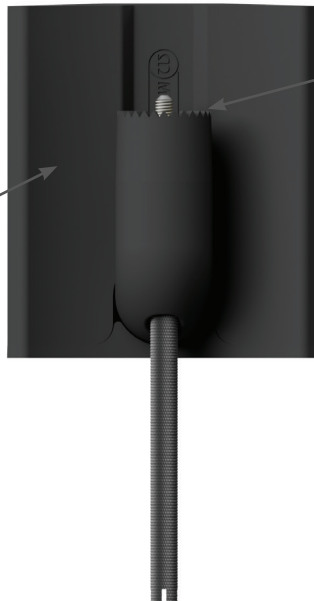
Cable Through Hole.
Feed cable through and around into terminals.

Loudspeaker Terminals.
Push down on the terminals to clamp the cable in place.

Loudspeaker Mounting Arm.
This is the arm the loudspeaker will sit on.

Loudspeaker Fixing Bolt.
Secured from below, this fixes the loudspeaker to the bracket. There is a guide in the back of the loudspeaker to help locate the screwdriver in the bolt. The bolt has a longer shaft to aid installation.

Bracket Cover.
When secured to the wall, slide this over the bracket to hide cables and wall fixings.



Teeth.
Used to set the angle of the loudspeaker and also help grip it in place.



V-CORNER Back to back

It is possible to mount a pair of V240's next to each other using 2 corner brackets. This will give almost 180 degrees of sound dispersion. If mounting them in this configuration, fix one side of the first bracket to the wall. Align the second bracket to the first and mark its fixing points. It might be beneficial to hold them together with a small nut and bolt or cable tie (neither supplied). Once fixing points have been drilled, use the appropriate fixings and secure the second bracket to the wall.



V-CLUSTER Mount Recommended for use with V240-LV

To get full 360 degrees of sound, four V240-LV's can be used in conjunction with the V-CLUSTER Mount. This is mounted to a standard sized pole and bracket (not sold by Monitor Audio) from the ceiling.

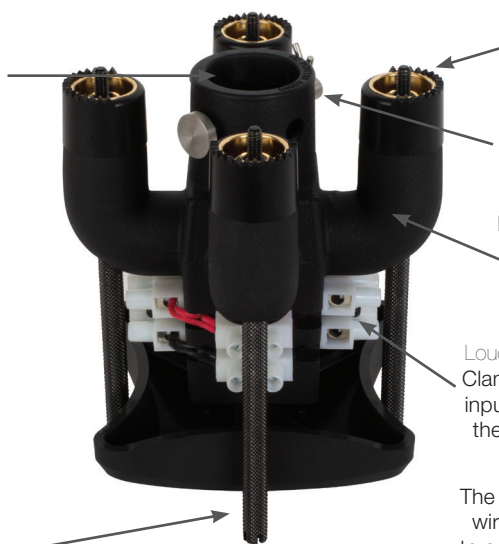
Pole Fixing Location.

The pole used should have an outer diameter of 21 - 27mm and will need a through hole drilled to accept the locking pin. Diameter 6.5mm.

Feed the input cable down the pole and through here and loop round to the first connection block. If connecting on to another group of speakers a return cable will need to be run from the last block and back up the pole to the next V-CLUSTER.

Loudspeaker Fixing Bolt.

Secured from below, this locks the loudspeaker to the bracket.



Teeth.
Used to set the angle of the loudspeaker and also help grip it in place.

Locking Pin & Clip.
Used to lock the bracket onto the pole.

Loudspeaker Mounting Arms.
These are the arms the loudspeakers will sit on.

Loudspeaker Connecting Blocks.
Clamp type terminals to accept input cables and daisy chain to the additional speakers on the bracket.

The loudspeaker blocks are pre wired for convenience. Ready to accept the feed and return (if required) cables running.

They are pre wired to the mounting arm.

The V-CLUSTER bracket facilitates installation of the Vecta V240-LV speakers with a variety of general-purpose ceiling-fan-pole assemblies available from many manufacturers. Since different fan-pole assemblies have different weight capacities, pole diameters and mounting systems, it is the customer's responsibility to check with the fan-pole-assembly manufacturer or dealer to determine whether that specific pole-mount assembly is capable of correctly and securely attaching to the V-CLUSTER bracket and handling the weight and proportions of these speakers in a safe and stable manner. Monitor Audio disclaims any liability for the selection of fan-pole assemblies and/or correct compatibility between the selected fan-pole assembly and the V-CLUSTER bracket. The installer is responsible for proper selection and use of mounting hardware, to properly and safely pole-mount the speakers.

Fitting the Loudspeaker

Once the correct bracket has been fitted, mounting the loudspeaker could not be easier.

Simply align the bracket arm with the mounting location on the loudspeaker and slot it into place. Once in place, the loudspeaker fixing bolt must be tightened to hold the loudspeaker securely in place. There is a small recess in the back of the loudspeaker to align the screwdriver with the bolt.

This process is universal for all brackets.



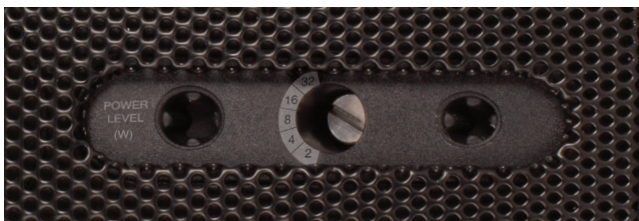
Screwdriver Guide
Aids installation and
guides the screwdriver to
the fixing screw.

Setting up the V240-LV

This loudspeaker has a selection switch located beneath the badge and should be set according to the number of loudspeakers you are installing and the power output (per channel) of the amp.

The switch position depends on the power rating of the amplifier. The summed total power rating of all loudspeakers should not exceed that of the amplifier. For example, if you are using the Monitor Audio IA800-2C and there are 30 loudspeakers per channel, the switch should be set to 16w for maximum efficiency. A lower value switch setting will help control excessive volume and SPL output of the loudspeakers, should this be required. Please refer to the table for recommended switch positioning.

When using this loudspeaker we recommend using the Monitor Audio IA800-2C.



Number of Speakers	1 - 25	26 - 50	51 - 100	101 - 200	201 - 400	Number of Speakers	1 - 15	16 - 31	32 - 62	63 - 125	126 - 250
Switch Setting for IA800 - 2C	32	16	8	4	2	Switch Setting for 500W Amp	32	16	8	4	2
Number of Speakers	1 - 7	8 - 15	16 - 31	32 - 62	63 - 125						
Switch Setting for 250W Amp	32	16	8	4	2						

Finished Locations

Below are some examples of the product installed in finished locations use the brackets.



Horizontal or vertical flat on a wall



Horizontal or vertical flat on a wall



Mounted with optional Wedge



Mounted in a corner



Mounted under eaves



2 x Mounted back to back



V240 LV with V-CLUSTER Bracket

Vecta Installation Guide video available,
scan the QR code or visit:
vimeo.com/monitoraudio/vecta



Specifications

Model	V240	V240-LV
System Format	2-way (3 driver)	
Frequency Response (-6dB)	70 Hz - 25 kHz	
Sensitivity (1W@1M)	88 dB	
Nominal Impedance	4 Ohms	70/100 Volt line level
Minimum Impedance	4.01 Ohms @ 240 Hz	N/A
Maximum SPL @1M	108 dBA (each)	
Power handling (RMS)	100 W	
Recommended Amplifier Requirements (RMS)	25 – 100 W	
Bass Alignment	Sealed cabinet	
Crossover Frequency	2.5 kHz	
Connection Method	Gold plated push terminals – attached to bracket	
Environmental Protection Rating	IP55	
Operating Temperature Range	-25 - 65°C / -13 - 149°F	
Bracket Pivot Angle	Wall: 25°. Wedge: Additional 32.5°. Combined Max: 45°.	
Drive Unit Complement	2 x 4" Drivers featuring C-CAM metal cone technology 25mm (1") Gold C-CAM dome tweeter	
Dimensions (H x W x D)	336 x 243.2 x 150 mm 13 1/4 x 9 9/16 x 5 7/8 "	
Product Weight	2.55 Kg / 5 lb 10 oz	3.56 kg / 7 lb 14 oz
Finishes	UV Resistant Black or White (Signal White, RAL 9003)	

Warranty

Both the craftsmanship and the performance of this product is covered by the manufacturer's warranty against manufacturing defects, provided that the product was supplied by an authorised Monitor Audio retailer under the consumer sale agreement. For the period of cover please refer to the product page on our website: monitoraudio.com for this product.

When purchasing Monitor Audio products, please keep your receipt of purchase safe, as this validates your warranty.



Monitor Audio Ltd.
24 Brook Road
Rayleigh, Essex
SS6 7XJ
England

Tel: +44 (0)1268 740580
Fax: +44 (0)1268 740589
Email: info@monitoraudio.com
Web: www.monitoraudio.com

**Designed & Engineered in the United Kingdom
Made In China**

Version 2. 2018